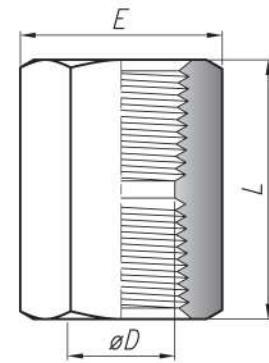


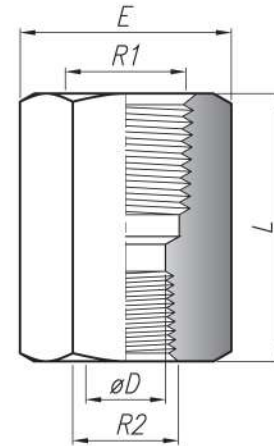
## CUP Cupla

Modelo	Roscas NPT	DIMENSIONES (mm)			P máx. (bar)
		L	E	ØD	
CUP-1-	1/8"	21	14.3	8.5	503
CUP-2-	1/4"	30	19.05	11.2	503
CUP-3-	3/8"	32	22.2	14	379
CUP-4-	1/2"	40	27.0	18	338
CUP-6-	3/4"	45	38.1	23	296
CUP-8-	1"	51	44.4	28	303



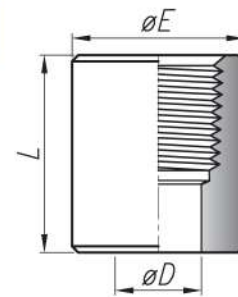
## CUR Cupla de Reducción

Modelo	Roscas NPT		DIMENSIONES (mm)			P máx. (bar)
	R1	R2	L	E	ØD	
CUR-3-2-	3/8"	1/4"	32	22.2	11.5	379
CUR-4-2-	1/2"	1/4"	37	27	11.5	338
CUR-4-3-	1/2"	3/8"	37	27	14	338
CUR-6-2-	3/4"	1/4"	40	34.9	11.5	296
CUR-6-3-	3/4"	3/8"	40	34.9	14	296
CUR-6-4-	3/4"	1/2"	45	34.9	18	296
CUR-8-6-	1"	3/4"	55	44.4	23	303



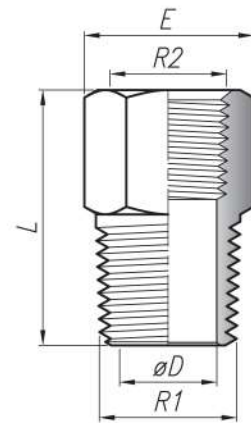
## MCU 1/2 Cupla ANSI B16.11 S.3000

Modelo	Roscas NPT	DIMENSIONES (mm)			P máx. (bar)
		L	ØE	ØD	
MCU 2-	1/4"	17.4	19.1	10.5	207
MCU 3-	3/8"	19.1	22.2	14	207
MCU 4-	1/2"	23.8	28.6	17.25	207
MCU 6-	3/4"	25.4	34.9	22.25	207



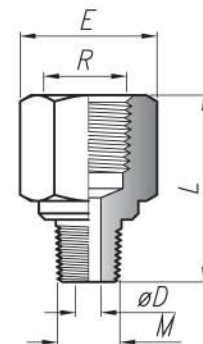
## BUR Buje de Reducción

Modelo	Roscas NPT		DIMENSIONES (mm)			P máx. (bar)
	R1	R2	L	E	ØD	
BUR-2-1-	1/4"	1/8"	25	14.3	7	503
BUR-3-2-	3/8"	1/4"	32	19.1	10	503
BUR-4-2-	1/2"	1/4"	28	22.2	11.5	503
BUR-4-3-	1/2"	3/8"	35	22.2	12	379
BUR-6-2-	3/4"	1/4"	31	27	11.5	503
BUR-6-3-	3/4"	3/8"	38	27	11.5	379
BUR-6-4-	3/4"	1/2"	43	27	16.5	338
BUR-8-4-	1"	1/2"	40	35	17.5	338
BUR-8-6-	1"	3/4"	47	35	22	296



## ADR Adaptador Reducción

Modelo	Roscas NPT		DIMENSIONES (mm)			P máx. (bar)
	R	M	E	L	ØD	
ADR-2-1-	1/4"	1/8"	19	30	4	503
ADR-4-2-	1/2"	1/4"	27	45	7	338
ADR-4-3-	1/2"	3/8"	27	45	9.5	338
ADR-6-4-	3/4"	1/2"	34.9	50	12	296



## ADN Adaptador NPTH-BSPM

Modelo	Roscas		DIMENSIONES (mm)			P máx (bar)
	R	M	E	L	ØD	
ADN-2-1-	1/4"	1/8"	19.05	30	3.5	315
ADN-2-2-	1/4"	1/4"	19.05	35	3.5	315
ADN-2-3-	1/4"	3/8"	19.05	37	3.5	315
ADN-3-3-	3/8"	3/8"	22.2	40	3.5	315
ADN-4-4-	1/2"	1/2"	27	48	3.5	160

NOTA: Incluye anillo PTFE rosca macho

## ADB Adaptador BSPH-NPTM

Modelo	Roscas		DIMENSIONES (mm)			P máx (bar)
	R	M	E	L	ØD	
ADB-2-1-	1/4"	1/8"	19.05	30	3.5	315
ADB-2-2-	1/4"	1/4"	19.05	35	3.5	315
ADB-2-3-	1/4"	3/8"	19.05	37	3.5	315
ADB-2-4-	1/4"	1/2"	22.2	37	3.5	315
ADB-3-2-	3/8"	1/4"	22.2	34	5	315
ADB-3-3-	3/8"	3/8"	22.2	34	5	315

## ALR Adaptador Lap-Joint a rosca

Modelo	Roscas NPT	Para Brida (*)	DIMENSIONES (mm)				P máx (bar)
			L	ØA	ØB	ØD	
ALR-4-4-	1/2"	1/2"	70	34.9	21.3	10.5	207
ALR-4-6-	1/2"	3/4"	73	42.9	26.9	10.5	207

(\*) Apto para bridas "Lap Joint" ANSI #150 y #300. Terminación de la cara de sello: Smooth Finish

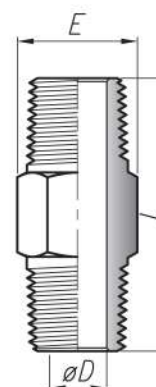
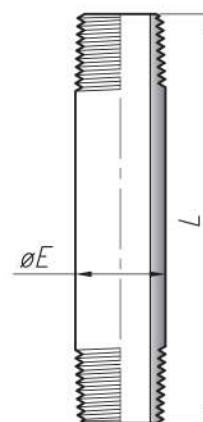
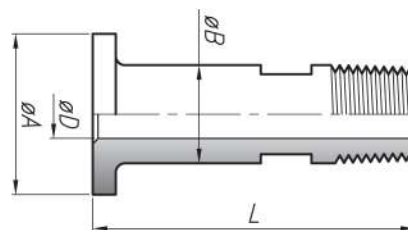
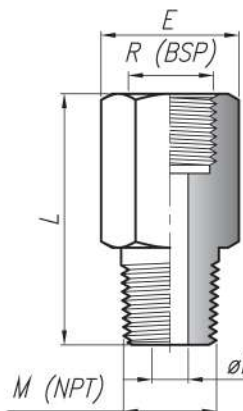
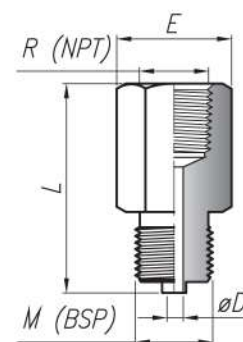
## NIP Niple

Modelo	Roscas NPT	DIMENSIONES (mm)		P máx (bar)
		L	ØE	
NIP-2-07-	1/4"	75	13.7	414
NIP-2-10-	1/4"	100	13.7	414
NIP-2-15-	1/4"	150	13.7	414
NIP-4-07-	1/2"	75	21.3	414
NIP-4-10-	1/2"	100	21.3	414
NIP-4-15-	1/2"	150	21.3	414
NIP-4-20-	1/2"	200	21.3	414

Para ordenar inserte sufijo 40 para SCH40 y 80 para SCH80. Ej. NIP 4-10-80-316

## ENT Entrerrosca

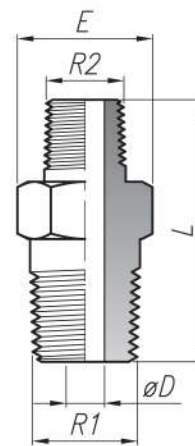
Modelo	Roscas NPT	DIMENSIONES (mm)			P máx (bar)
		L	E	ØD	
ENT-1-	1/8"	30	11.1	5	848
ENT-2-	1/4"	40	14.3	7	683
ENT-3-	3/8"	40	17.4	10	621
ENT-4-	1/2"	50	22.2	12	614
ENT-6-	3/4"	55	27	16	572
ENT-8-	1"	62	34.9	23	407





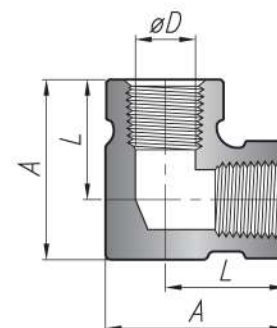
## ENR Entrerrosca de Reducción

Modelo	Roscas NPT		DIMENSIONES (mm)			P máx (bar)
	R1	R2	E	L	ØD	
ENR-2-1-	1/4"	1/8"	14.3	32	4.8	683
ENR-3-2-	3/8"	1/4"	17.4	40	7	621
ENR-4-2-	1/2"	1/4"	22.2	43	7	614
ENR-4-3-	1/2"	3/8"	22.2	43	7	614
ENR-6-2-	3/4"	1/4"	27	46	7	572
ENR-6-4-	3/4"	1/2"	27	49	11	572
ENR-8-4-	1"	1/2"	35	55	11	407
ENR-8-6-	1"	3/4"	35	57	16.5	407



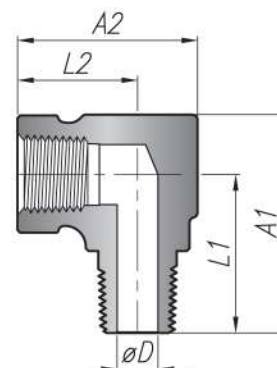
## CHH Codo Hembra

Modelo	Roscas NPT	DIMENSIONES (mm)			P máx (bar)
		A	L	ØD	
CHH-1-	1/8"	26.3	19	8.5	393
CHH-2-	1/4"	31.8	22	11	372
CHH-3-	3/8"	35.3	25.5	14	365
CHH-4-	1/2"	44	29	17	317



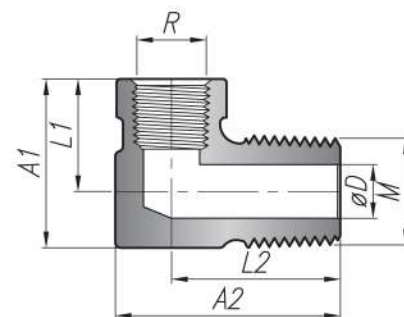
## CMH Codo Macho-Hembra

Modelo	Roscas NPT	DIMENSIONES (mm)					P máx (bar)
		A1	A2	L1	L2	ØD	
CMH-1-	1/8"	26.3	26.3	19	20	5	393
CMH-2-	1/4"	38.8	31.8	29	22	7	372
CMH-3-	3/8"	37.3	35.3	27.5	25.5	10.5	365
CMH-4-	1/2"	55	44	40	29	12	317



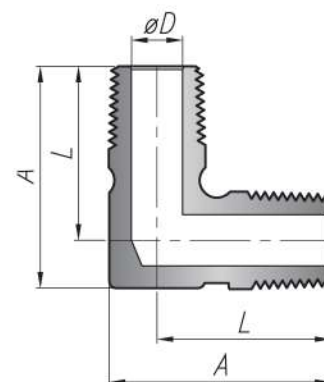
## COR Codo Reducción

Modelo	Roscas NPT		DIMENSIONES (mm)					P máx (bar)
	M	R	A1	A2	L1	L2	ØD	
COR-3-2-	3/8"	1/4"	32	38	22	28	10	372
COR-4-2-	1/2"	1/4"	32	43	22	33	10.5	372



## CMM Codo Macho

Modelo	Roscas NPT	DIMENSIONES (mm)			P máx (bar)
		A	L	ØD	
CMM-1-	1/8"	26.3	19	4.75	669
CMM-2-	1/4"	32.8	25.5	7	538
CMM-3-	3/8"	37.3	27.5	7.5	517
CMM-4-	1/2"	44	33	10.5	510



## THH Tee Hembra

Modelo	Roscas NPT	DIMENSIONES (mm)				P máx (bar)
		A	B	C	ØD	
THH-1-	1/8"	47	34.5	23.5	8	393
THH-2-	1/4"	51	36.5	25.5	11.25	372
THH-3-	3/8"	60	45	34.5	14	365
THH-4-	1/2"	76	54	38	17.5	317
THH-6-	3/4"	63	57	38	23	340

NOTA: El modelo THH-6- no es de acero forjado.

## TML Tee Macho Lateral

Modelo	Roscas NPT			DIMENSIONES (mm)				P máx (bar)
	R1	R2	M	A	B	C	ØD	
TML-2-	1/4"	1/4"	1/4"	63	44.5	34	7	372

## TMC Tee Macho Central

Modelo	Roscas NPT			DIMENSIONES (mm)				P máx (bar)
	R1	R2	M	A	B	C	ØD	
TMC-2-	1/4"	1/4"	1/4"	63	44.5	34	7.5	372

## TMM Tee Macho

Modelo	Roscas NPT	DIMENSIONES (mm)				P máx (bar)
		A	B	C	ØD	
TMM-1-	1/8"	48	30	23	5	669
TMM-2-	1/4"	51	32.5	25.5	7.5	538
TMM-3-	3/8"	61	42.5	32	7.5	517
TMM-4-	1/2"	65	45	34	10.5	510
TMM-6-	3/4"	80	56	40	16	476

## TAP Tapón

Modelo	Roscas NPT	DIMENSIONES (mm)		P máx (bar)
		L	E	
TAP-1-	1/8"	16	11.1	1034
TAP-2-	1/4"	22	14.3	1034
TAP-3-	3/8"	22	17.5	1034
TAP-4-	1/2"	28	22.2	1034
TAP-6-	3/4"	32	27	689
TAP-8-	1"	38	34.9	689

THH-6-

