

# HIGH PRESSURE TECHNOLOGY



## HIGH PRESSURE SYSTEMS AND UNITS

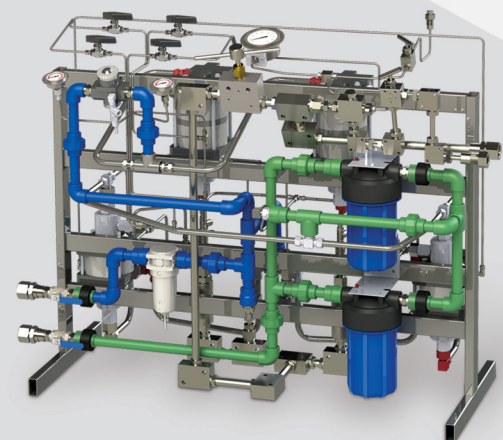
Pneumatic units, designed to generate air, gas or liquid pressure.  
Suitable for pressures up to 57,000 psi.

### TYPICAL APPLICATIONS:

- Pneumatic and hydraulic testing for valves and any high pressure recipient
- Hydraulic and cycle testing for hoses
- Power units for tools and presses
- Instrument calibration
- Chemical pumping
- Control panels
- Valve actuation
- Booster units to fill N, O, etc. cylinders

Employed in power plants, oil & gas, mining, automotive industry, petrochemical and chemical industries, diving, among other markets.

- ▣ Both standard and custom units are available. Static or portable. Plug and play design, self-contained, only compressed air supply is required.



# STANDARD MODELS

## MAIN TECHNICAL FEATURES:

- Pneumatic drive, does not require electricity
- Equipped with one or two pumps to improve prefilling
- Usable with water, glycol, light oil and other fluids
- “Plug and play” design
- Portable
- Stainless Steel structure
- Stainless steel piping and components
- Air filter with automatic purge
- Accurate pressure regulation
- Additional output for reference instrument / logger
- **Setup, repair and maintenance service**
- **Replacements parts in stock**

## ▶ HYDRAULIC UNIT TYPE **BP-10**



▶ Fluid: Water  
Max. Output pressure: 30,000 psi.  
Flow: 0.28 l/m @ 1,450 psi  
0.23 l/m @ 7,250 psi  
0.11 l/m @ 14,500 psi  
Dimensions: 300W x 330L x 870H  
Weight: 23 Kg.

- Easy to operate
- Pneumatic drive
- Manual drive
- Built-in fluid container
- 4" Manometer

## ▶ HYDRAULIC UNIT TYPE **BP-20**



▶ Fluid: Water  
Max. Output pressure: 15,000 psi.  
Flow: 10 l/m @ 14.5 psi  
0.47 l/m @ 1,450 psi  
0.35 l/m @ 7,250 psi  
Dimensions: 996W x 410L x 480H  
Weight: 40 Kg.

- Easy to operate
- Built-in dual filter
- Pre-filling pump
- No electricity required
- 4" Manometer

## ▶ HYDRAULIC UNIT TYPE **BP-30**



▶ Fluid: Water  
Max. Output pressure: 30,000 psi.  
Flow: 12 l/m @ 14.5 psi  
7 l/m @ 725 psi  
0.4 l/m @ 14,500 psi  
Dimensions: 945W x 400L x 530H  
Weight: 80 Kg.

- Easy to operate
- Built-in dual filter
- Pre-filling pump
- Stainless steel enclosure
- 4" Manometer

## ▶ HYDRAULIC COMMAND UNIT FOR **BOP**



▶ Fluid: Hydraulic oil  
Max. Output pressure: 3,500 psi.  
Flow: 3.55 l/m @ 0 psi  
3.38 l/m @ 725 psi  
3.07 l/m @ 1,450 psi  
Dimensions: 530W x 1030L x 745H  
Weight: 150 Kg. (approx.)

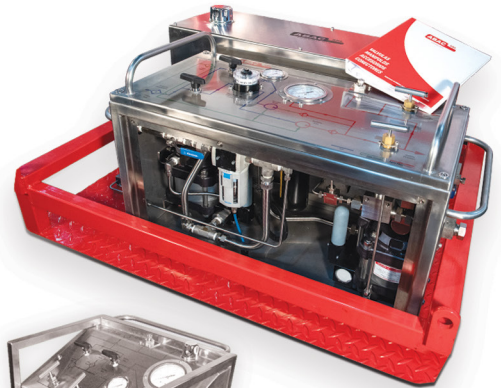
- 20 lts. bladder accumulator
- 30 lts. oil container
- 3 directional outputs
- Manual pump with triple security
- Portable with hoisting eyebolts

## OPTIONALS AND ACCESSORIES SUCH AS:

- Custom pressure and flow ranges
- Dual regulator
- Dual effect pumps
- Logging system: Datalogger or Chart recorder
- Digital pressure output
- Manual pump lever
- Fluid container
- Skid mount
- Low fluid level shut-off switch
- Hydraulic accumulators
- Remote command automation

# ***CUSTOM SOLUTIONS***

Solid experience in design and construction of equipment and systems based on user requirements.



## ***HIGH PRESSURE PUMPS, BOOSTERS AND COMPONENTS***

A wide line of pumps, boosters, valves, fittings and piping for medium and high pressure is also available.

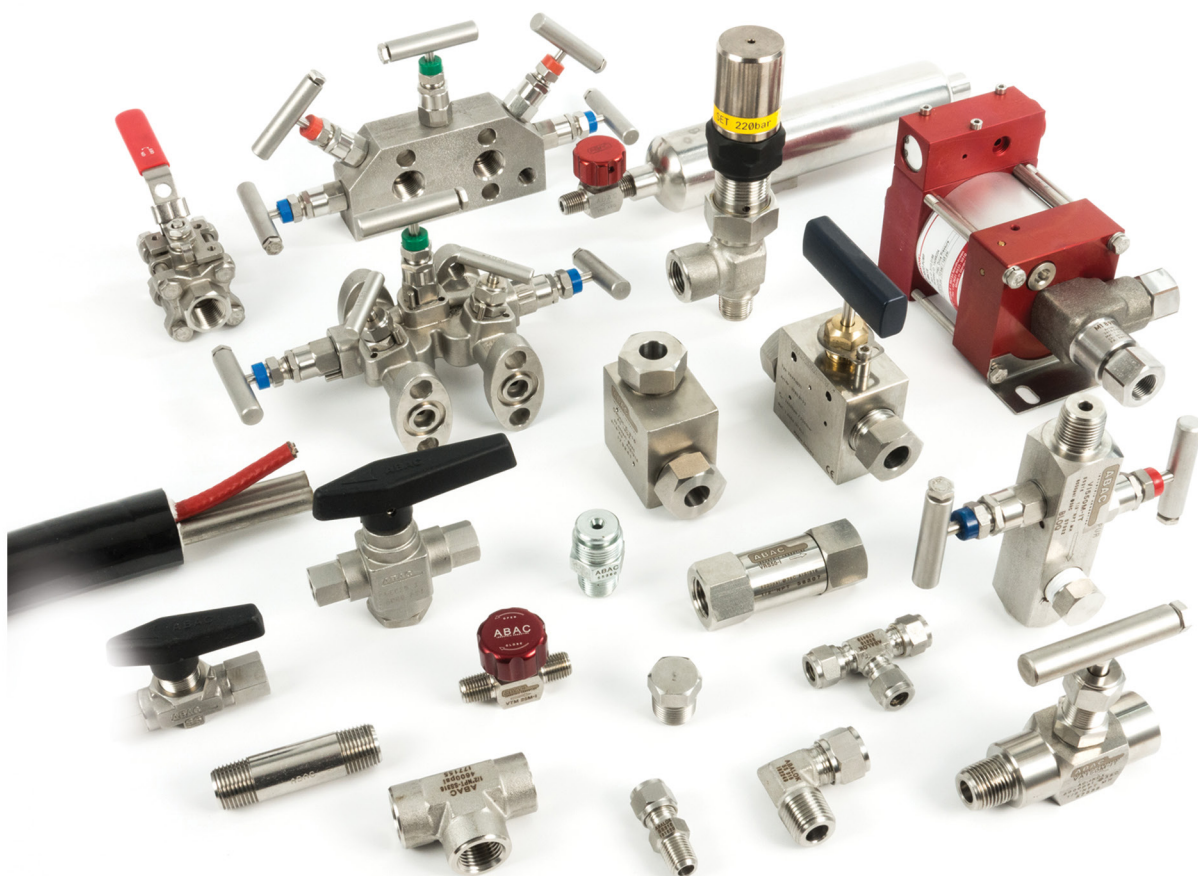


**MAXIMATOR®**  
Maximum Pressure.

## Reliable solutions for high requirement applications

▶ *The widest variety of pressure, flow and fluid control components:*

- Needle valves
- Instrument manifolds
- Fluid control components
- Ball valves
- Tube and pipe fittings
- Thermic insulation systems
- High pressure components and units



**ABAC** SRL

Tronador 374 - B1706BAB Haedo - Bs. As. - Argentina  
Tel./Fax: (54-11) 4659-4146 // 4460-0052  
ventas@abac.com.ar - www.abac.com.ar

All technical data contained in this publication is valid at the time of its release, and ABAC reserves the right to modify them at any time without notice.