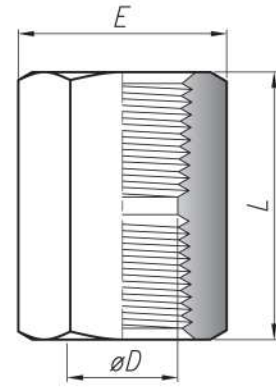


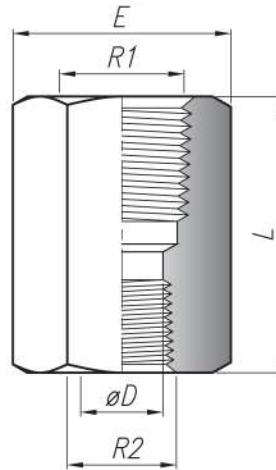
CUP Coupling

Model	NPT thread	MEASURES (mm)			P max. (psi)
		L	E	ØD	
CUP-1-	1/8"	21	14.3	8.5	7150
CUP-2-	1/4"	30	19.05	11.2	7150
CUP-3-	3/8"	32	22.2	14	5390
CUP-4-	1/2"	40	27.0	18	4800
CUP-6-	3/4"	45	38.1	23	4210
CUP-8-	1"	51	44.4	28	4310



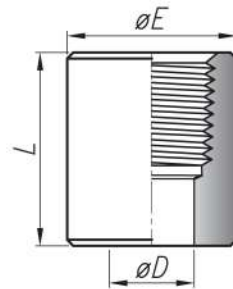
CUR Reducing Coupling

Model	NPT thread		MEASURES (mm)			P max. (psi)
	R1	R2	L	E	ØD	
CUR-3-2-	3/8"	1/4"	32	22.2	11.5	5390
CUR-4-2-	1/2"	1/4"	37	27	11.5	4806
CUR-4-3-	1/2"	3/8"	37	27	14	4806
CUR-6-2-	3/4"	1/4"	40	34.9	11.5	4210
CUR-6-3-	3/4"	3/8"	40	34.9	14	4210
CUR-6-4-	3/4"	1/2"	45	34.9	18	4210
CUR-8-6-	1"	3/4"	55	44.4	23	4310



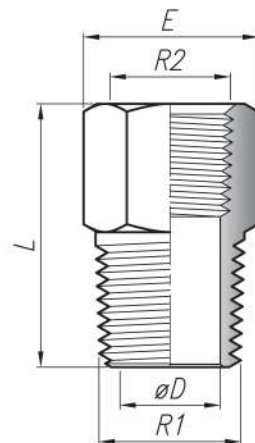
MCU 1/2 Coupling ANSI B16.11 S.3000

Model	NPT thread	MEASURES (mm)			P max. (psi)
		L	ØE	ØD	
MCU 2-	1/4"	17.4	19.1	10.5	3000
MCU 3-	3/8"	19.1	22.2	14	3000
MCU 4-	1/2"	23.8	28.6	17.25	3000
MCU 6-	3/4"	25.4	34.9	22.25	3000



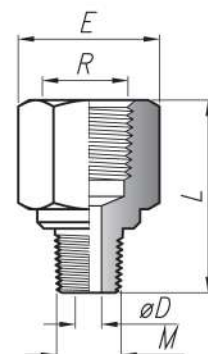
BUR Reducing Bushing

Model	NPT thread		MEASURES (mm)			P max. (psi)
	R1	R2	L	E	ØD	
BUR-2-1-	1/4"	1/8"	25	14.3	7	7150
BUR-3-2-	3/8"	1/4"	32	19.1	10	7150
BUR-4-2-	1/2"	1/4"	28	22.2	11.5	7150
BUR-4-3-	1/2"	3/8"	35	22.2	12	5390
BUR-6-2-	3/4"	1/4"	31	27	11.5	7150
BUR-6-3-	3/4"	3/8"	38	27	11.5	5400
BUR-6-4-	3/4"	1/2"	43	27	16.5	4806
BUR-8-4-	1"	1/2"	40	35	17.5	4806
BUR-8-6-	1"	3/4"	47	35	22	4310



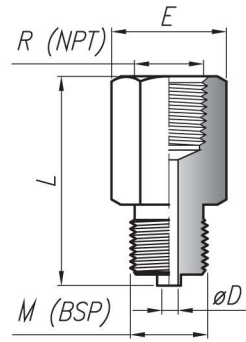
ADR Reducing Adapter

Model	NPT thread		MEASURES (mm)			P max. (psi)
	R	M	E	L	ØD	
ADR-2-1-	1/4"	1/8"	19	30	4	7150
ADR-4-2-	1/2"	1/4"	27	45	7	4806
ADR-4-3-	1/2"	3/8"	27	45	9.5	4806
ADR-6-4-	3/4"	1/2"	34.9	50	12	4210



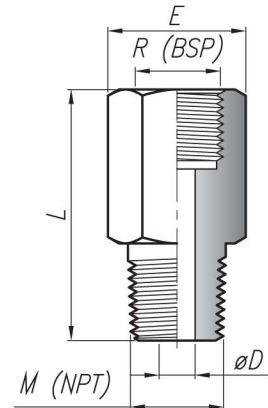
ADN NPTF-BSPM Adapter

Model	Thread		MEASURES (mm)			P max (psi)
	R	M	E	L	ØD	
ADN-2-1-	1/4"	1/8"	19.05	30	3.5	4480
ADN-2-2-	1/4"	1/4"	19.05	35	3.5	4480
ADN-2-3-	1/4"	3/8"	19.05	37	3.5	4480
ADN-3-3-	3/8"	3/8"	22.2	40	3.5	4480
ADN-4-4-	1/2"	1/2"	27	48	3.5	2270



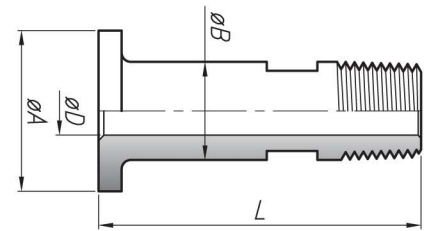
ADB BSPF-NPTM Adapter

Model	Thread		MEASURES (mm)			P max (psi)
	R	M	E	L	ØD	
ADB-2-1-	1/4"	1/8"	19.05	30	3.5	4570
ADB-2-2-	1/4"	1/4"	19.05	35	3.5	4570
ADB-2-3-	1/4"	3/8"	19.05	37	3.5	4570
ADB-2-4-	1/4"	1/2"	22.2	37	3.5	4570
ADB-3-2-	3/8"	1/4"	22.2	34	5	4570
ADB-3-3-	3/8"	3/8"	22.2	34	5	4570



ALR Lap-Joint to Thread Adapter

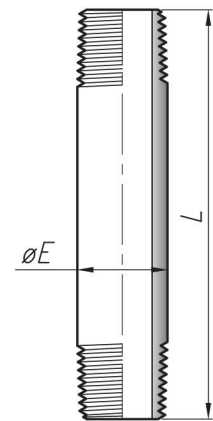
Model	NPT thread	Flange Size (")	MEASURES (mm)				P max (psi)
			L	ØA	ØB	ØD	
ALR-4-4-	1/2"	1/2"	70	34.9	21.3	10.5	2940
ALR-4-6-	1/2"	3/4"	73	42.9	26.9	10.5	2940



(*) For use with ANSI #150 and #300 lap joint pipe flanges. Smooth finish sealing surface

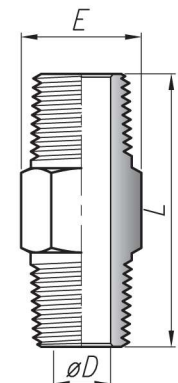
NIP Nipple

Model	NPT thread	MEASURES (mm)		P max (psi)
		L	ØE	
NIP-2-07-	1/4"	75	13.7	6000
NIP-2-10-	1/4"	100	13.7	6000
NIP-2-15-	1/4"	150	13.7	6000
NIP-4-07-	1/2"	75	21.3	6000
NIP-4-10-	1/2"	100	21.3	6000
NIP-4-15-	1/2"	150	21.3	6000
NIP-4-20-	1/2"	200	21.3	6000



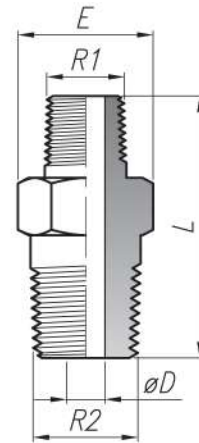
ENT Hex Nipple

Model	NPT thread	MEASURES (mm)			P max (psi)
		L	E	ØD	
ENT-1-	1/8"	30	11.1	5	12060
ENT-2-	1/4"	40	14.3	7	9710
ENT-3-	3/8"	40	17.4	10	8830
ENT-4-	1/2"	50	22.2	12	8730
ENT-6-	3/4"	55	27	16	8130
ENT-8-	1"	62	34.9	23	5790



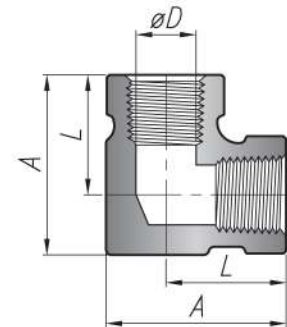
ENR Hex Reducing Nipple

Model	NPT thread		MEASURES (mm)			P max (psi)
	R1	R2	E	L	ØD	
ENR-2-1-	1/4"	1/8"	14.3	32	4.8	9710
ENR-3-2-	3/8"	1/4"	17.4	40	7	8830
ENR-4-2-	1/2"	1/4"	22.2	43	7	8730
ENR-4-3-	1/2"	3/8"	22.2	43	7	8730
ENR-6-2-	3/4"	1/4"	27	46	7	8130
ENR-6-4-	3/4"	1/2"	27	49	11	8130
ENR-8-4-	1"	1/2"	35	55	11	5790
ENR-8-6-	1"	3/4"	35	57	16.5	5790



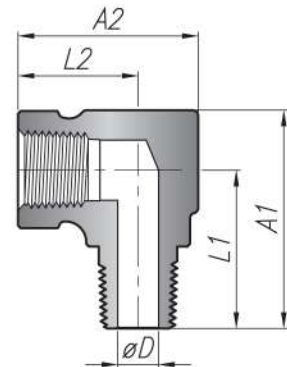
CHH Female Elbow

Model	NPT thread	MEASURES (mm)			P max (psi)
		A	L	ØD	
CHH-1-	1/8"	26.3	19	8.5	5590
CHH-2-	1/4"	31.8	22	11	5290
CHH-3-	3/8"	35.3	25.5	14	5190
CHH-4-	1/2"	44	29	17	4500



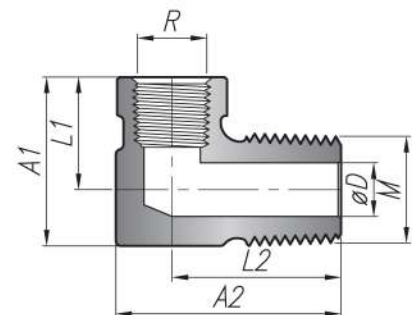
CMH Male-Female Elbow

Model	NPT thread	MEASURES (mm)					P max (psi)
		A1	A2	L1	L2	ØD	
CMH-1-	1/8"	26.3	26.3	19	20	5	5590
CMH-2-	1/4"	38.8	31.8	29	22	7	5290
CMH-3-	3/8"	37.3	35.3	27.5	25.5	10.5	5190
CMH-4-	1/2"	55	44	40	29	12	4500



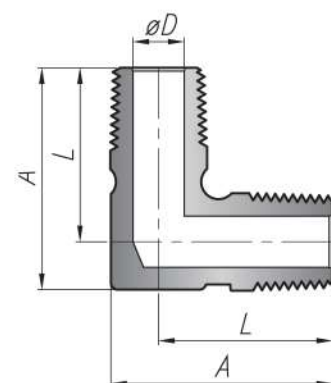
COR Reducing Elbow

Model	NPT thread		MEASURES (mm)					P max (psi)
	M	R	A1	A2	L1	L2	ØD	
COR-3-2-	3/8"	1/4"	32	38	22	28	10	5290
COR-4-2-	1/2"	1/4"	32	43	22	33	10.5	5290



CMM Male Elbow

Model	NPT thread	MEASURES (mm)			P max (psi)
		A	L	ØD	
CMM-1-	1/8"	26.3	19	4.75	9510
CMM-2-	1/4"	32.8	25.5	7	7650
CMM-3-	3/8"	37.3	27.5	7.5	7350
CMM-4-	1/2"	44	33	10.5	7250



THH Female Tee

Model	NPT thread	MEASURES (mm)				P max (psi)
		A	B	C	ØD	
THH-1-	1/8"	47	34.5	23.5	8	5590
THH-2-	1/4"	51	36.5	25.5	11.25	5290
THH-3-	3/8"	60	45	34.5	14	5190
THH-4-	1/2"	76	54	38	17.5	4500
THH-6-	3/4"	63	57	38	23	5000

NOTE: The THH-6- model is not forged steel.

TML Male Run Tee

Model	NPT thread			MEASURES (mm)				P max (psi)
	R1	R2	M	A	B	C	ØD	
TML-2-	1/4"	1/4"	1/4"	63	44.5	34	7	5290

TMC Male Branch Tee

Model	NPT thread			MEASURES (mm)				P max (psi)
	R1	R2	M	A	B	C	ØD	
TMC-2-	1/4"	1/4"	1/4"	63	44.5	34	7.5	5290

TMM Male Tee

Model	NPT thread	MEASURES (mm)				P max (psi)
		A	B	C	ØD	
TMM-1-	1/8"	48	30	23	5	9500
TMM-2-	1/4"	51	32.5	25.5	7.5	7650
TMM-3-	3/8"	61	42.5	32	7.5	7350
TMM-4-	1/2"	65	45	34	10.5	7250
TMM-6-	3/4"	80	56	40	16	6770

TAP Plug

Model	NPT thread	MEASURES (mm)		P max (psi)
		L	E	
TAP-1-	1/8"	16	11.1	15000
TAP-2-	1/4"	22	14.3	15000
TAP-3-	3/8"	22	17.5	15000
TAP-4-	1/2"	28	22.2	15000
TAP-6-	3/4"	32	27	10000
TAP-8-	1"	38	34.9	10000

THH-6-

